

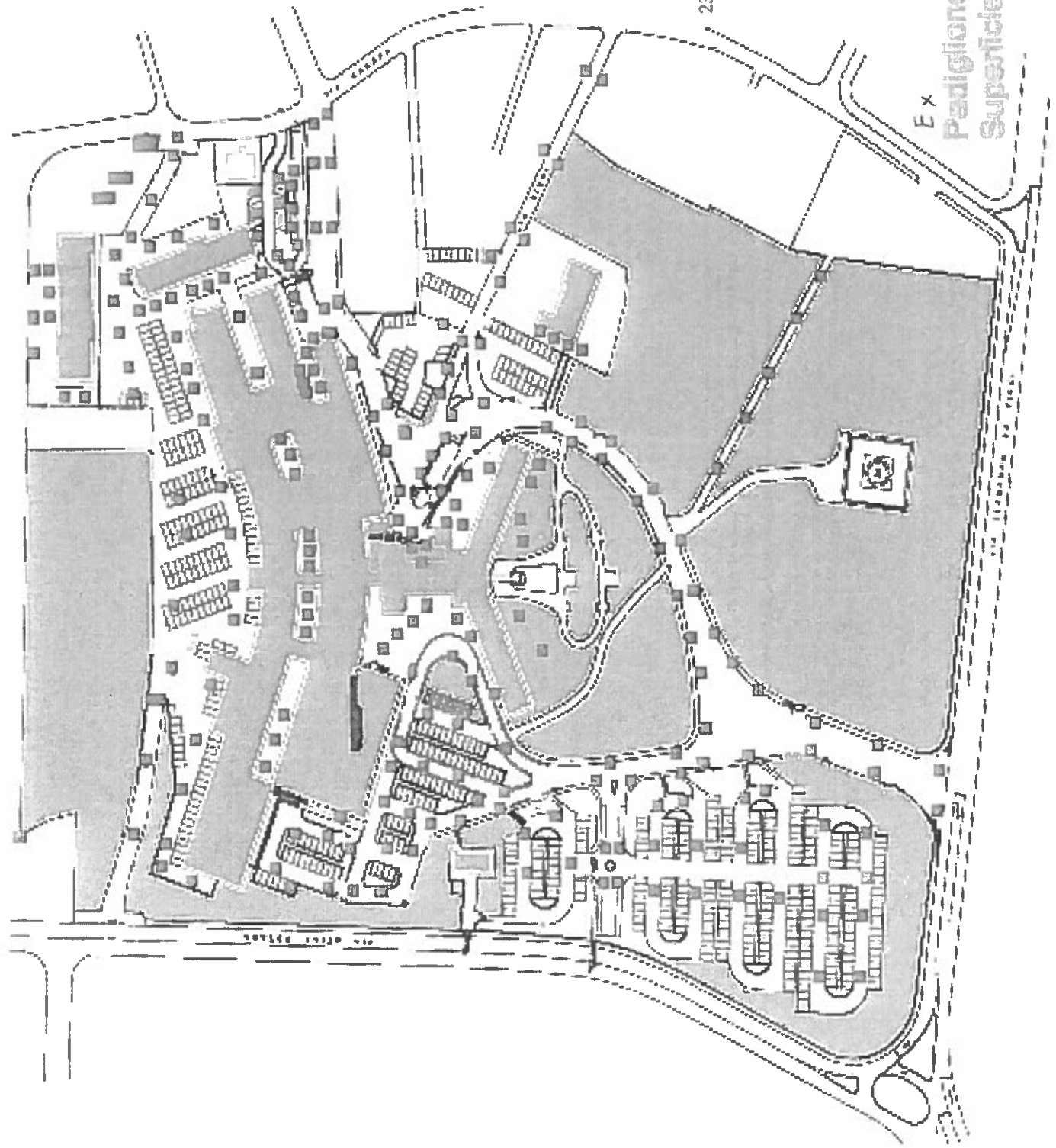
All. 1

Casa della Salute
SCHIO

239 CADITOIE DA TRATTARE

Ex

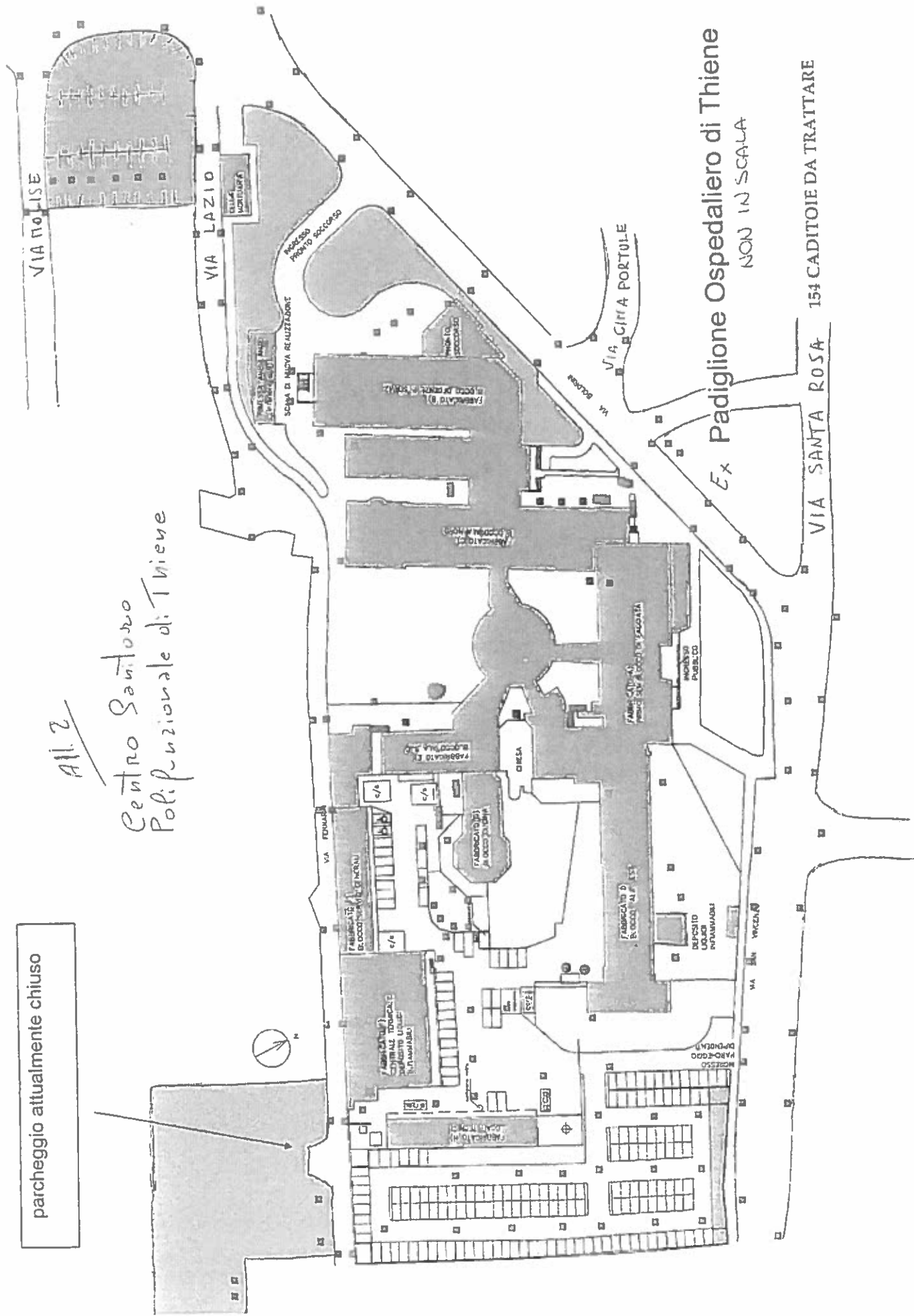
Padiglione Ospedaliero di Schio
Superficie mq. 27576



parcheggio attualmente chiuso

2116

Centro Santoro
Polizionale di Tivene

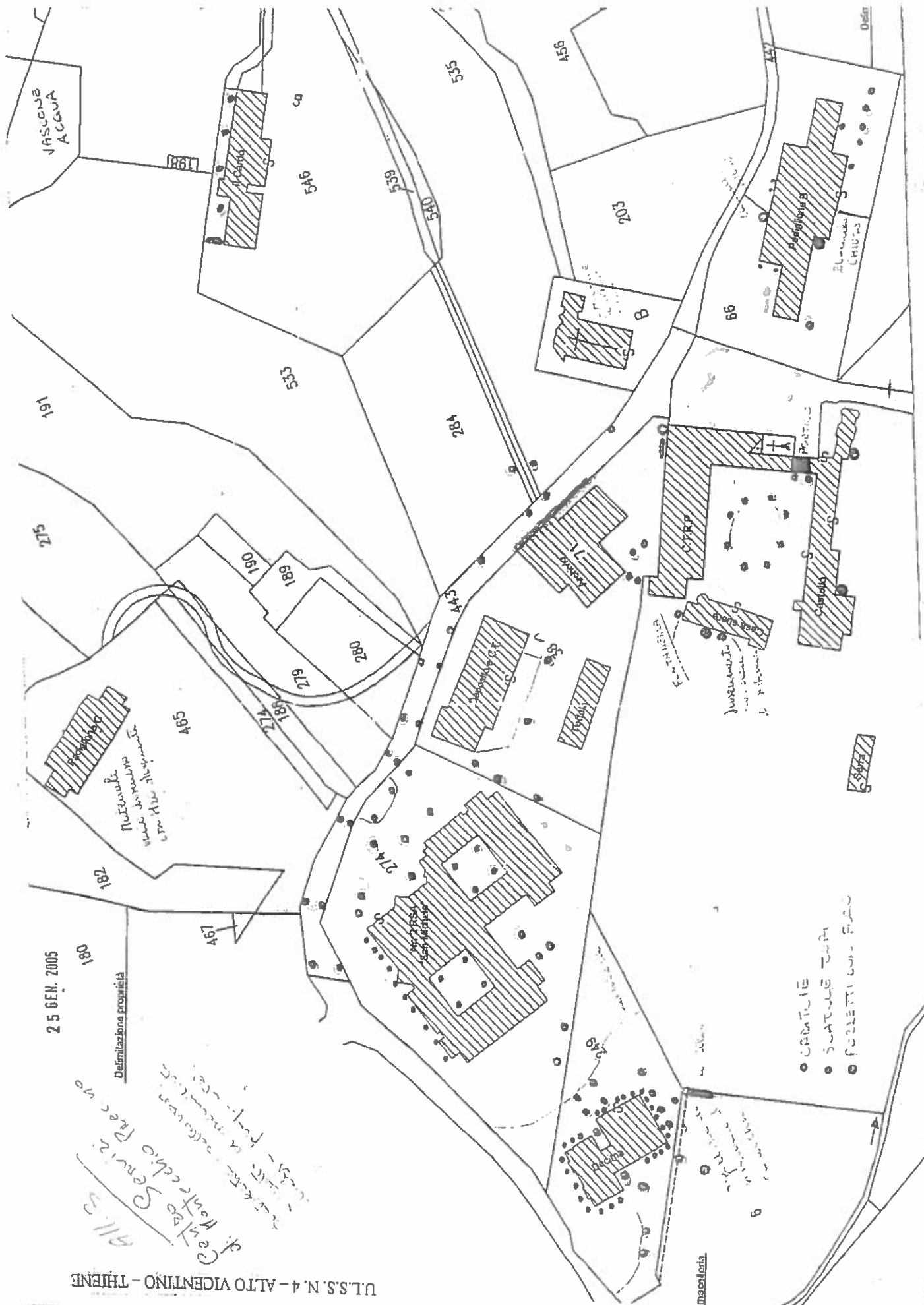


[Handwritten notes:]

1913
Feb 18
Gen'l
Frac no

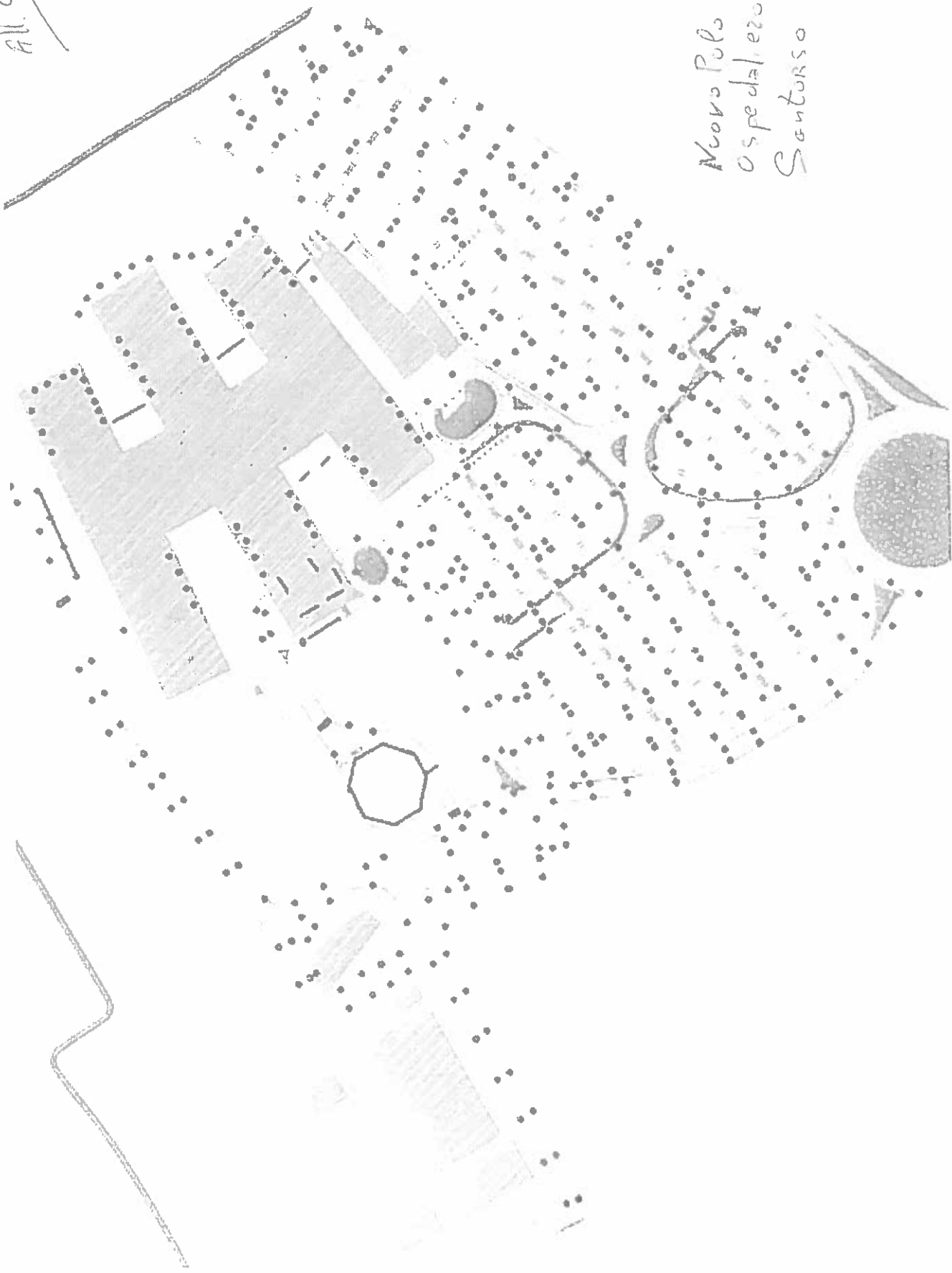
081

Definizione propria

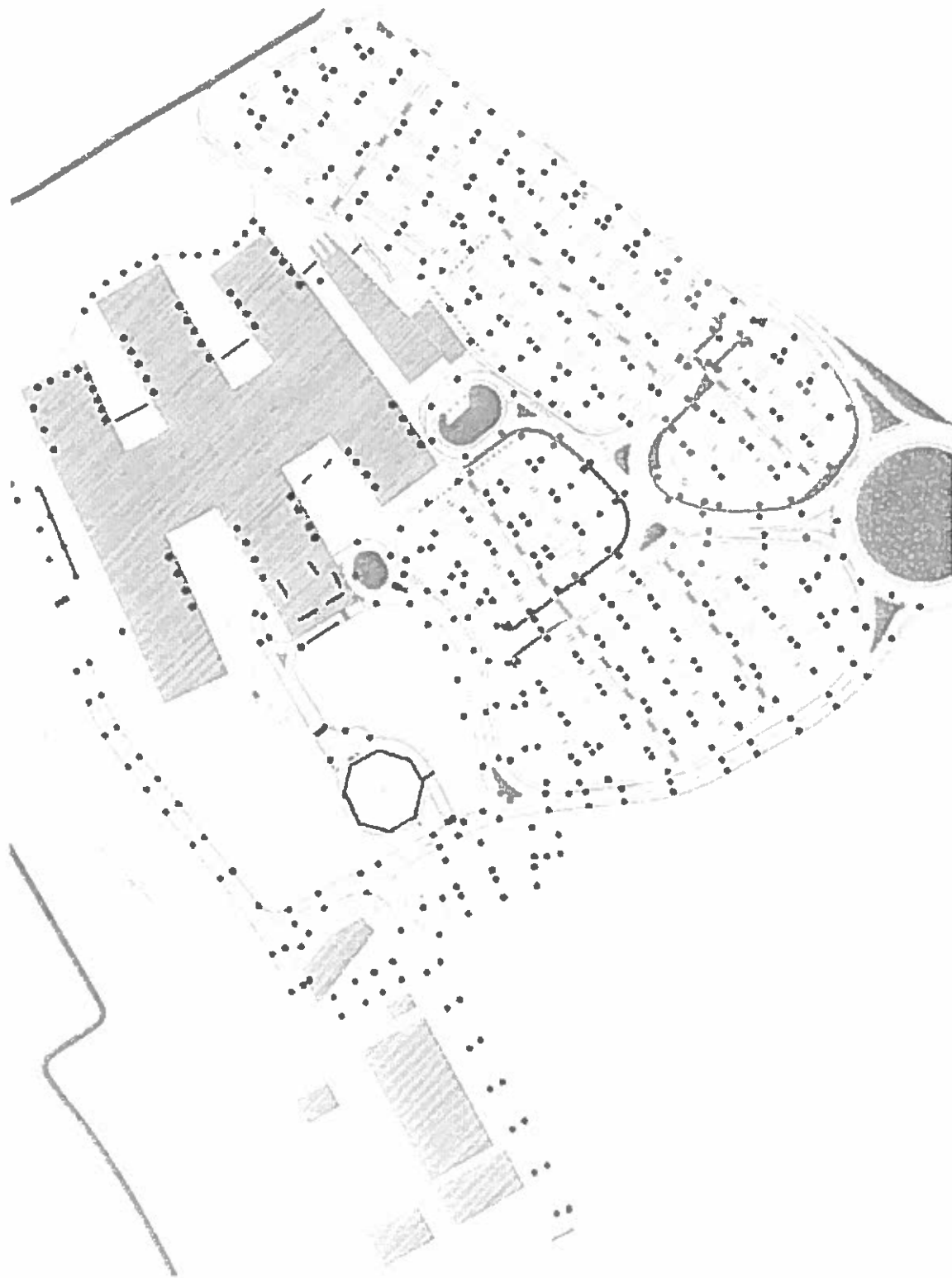


ALL 4

Nuovo Polo
Ospedaliero di
Santorso



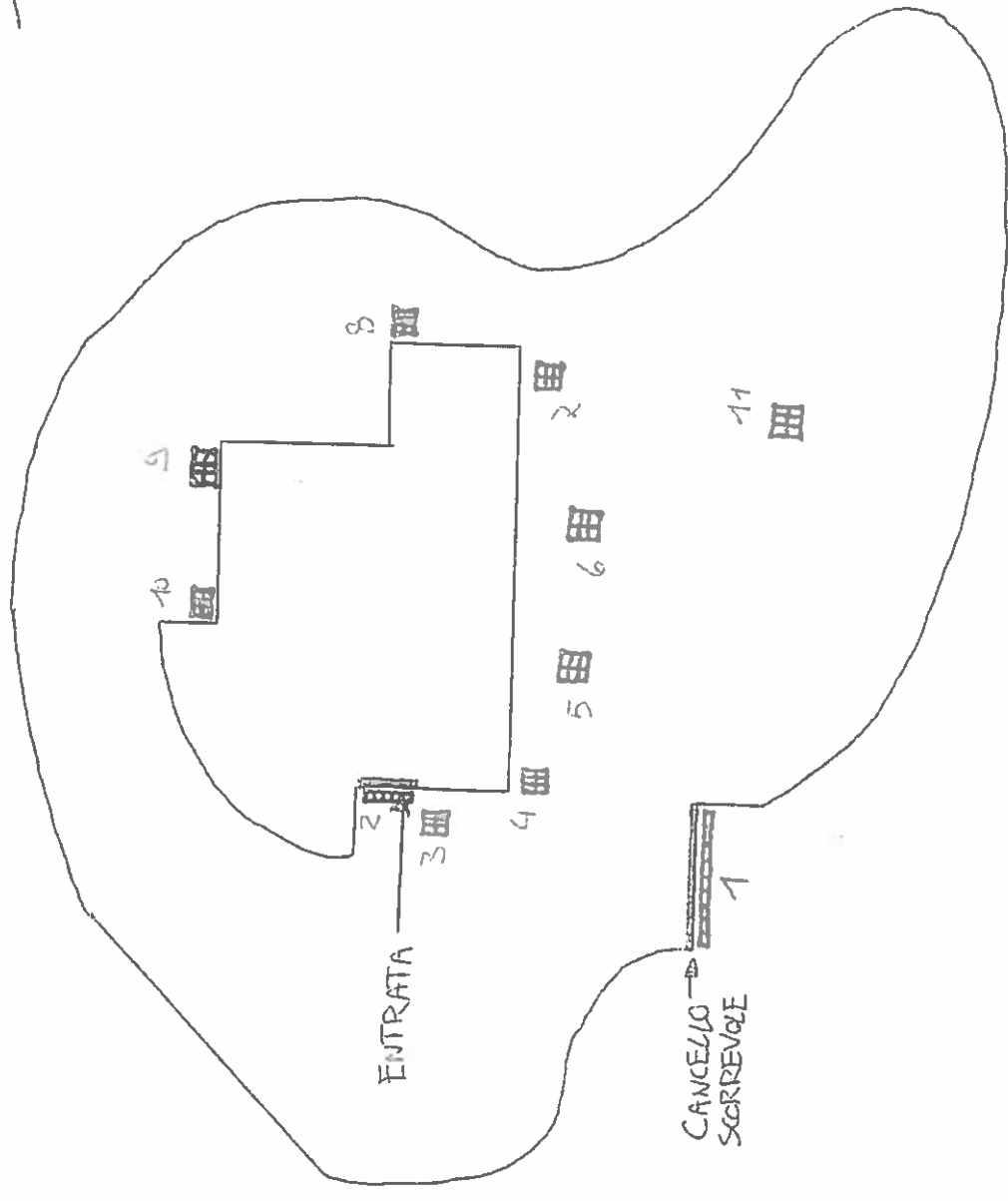
Nuovo Polo Ospedaliero Unico - Ospedale di Santorso - tavola caditoie (n° 597)




~~GEOD~~ CHIUPPANO

Centro Diurno

Al. 5



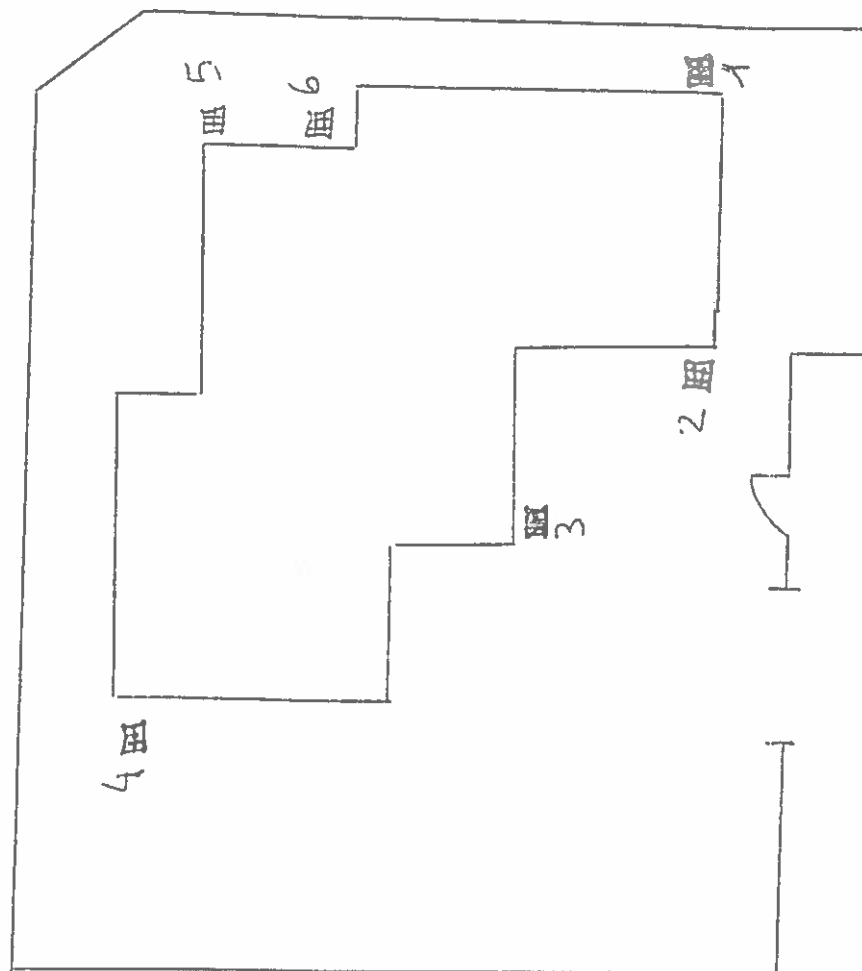
 TOMBINI APERTI

 TOMBINI CON SIGILLO
(SCARICO GRONDAIA)

 ORIGLIA ZONA ENTRATA E ZONA CANCELLO

~~SECO~~ LUGO
VIA BOSCHETTI
Centro Diurno

Al. 6



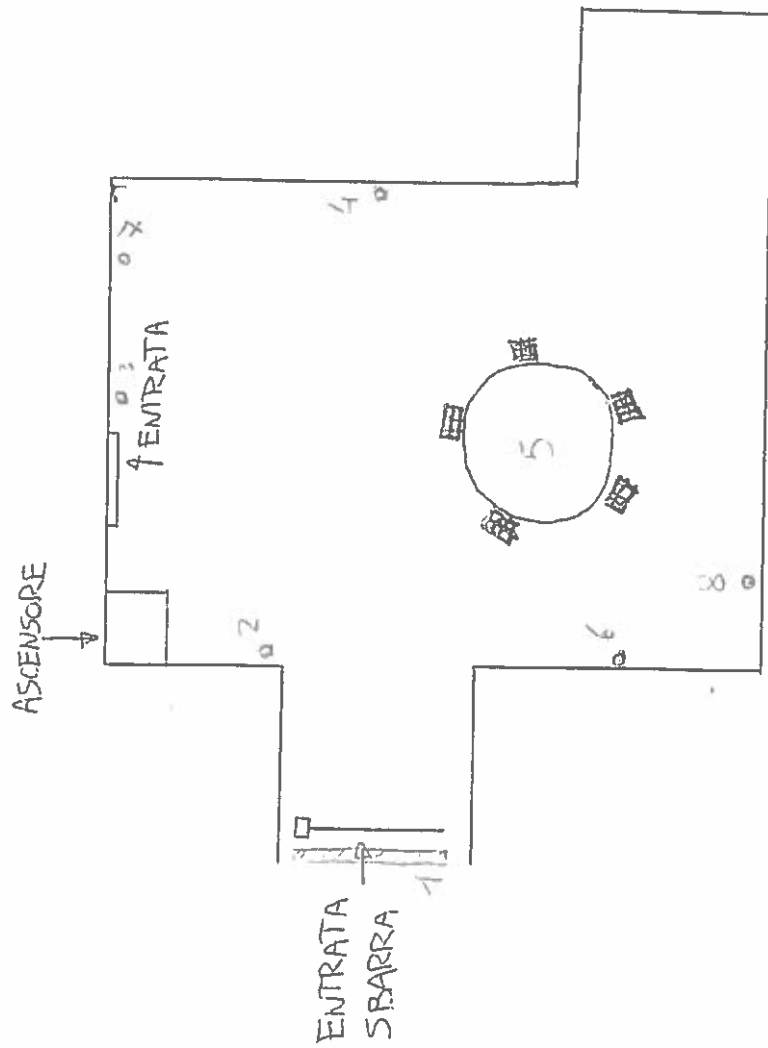
▣ Tombini con sigillo
(scarico grondaia)

▣ Tombini aperti

▣ Grondaia con scarico
in superficie

~~Distretto~~ ARSIERO
Sede Distrettuale

All. 7



■ CANTOIE SENZA
ACQUA STAGUANTE

■ GRIGLIA

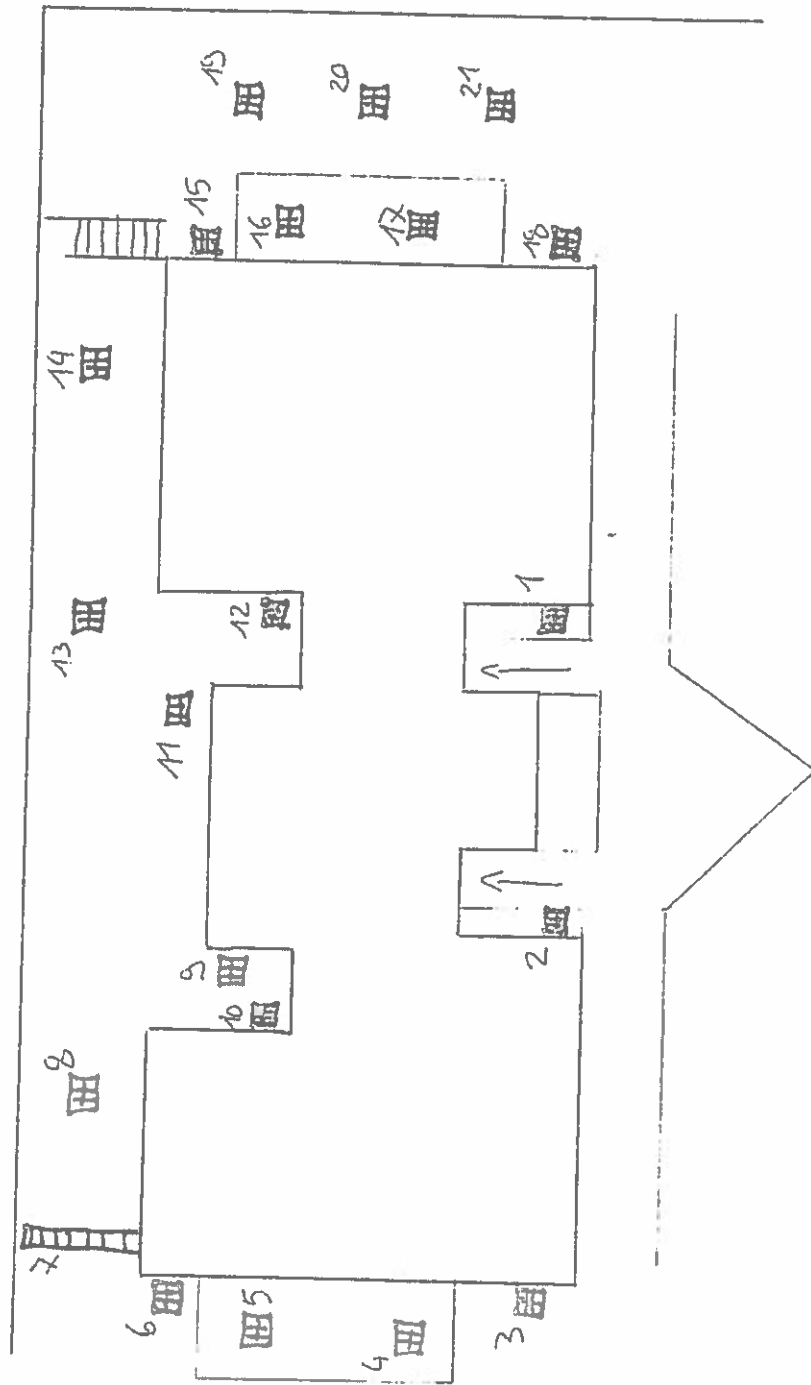
○ GRONDAIA SENZA TENNINO

~~PISTRETTO~~

MALO Via Kaffee

Sede Distrettuale

118



▤ TORBINI CON SIGILLO
(SCARICO GRONDAIA)

▤ TORBINI APERTI

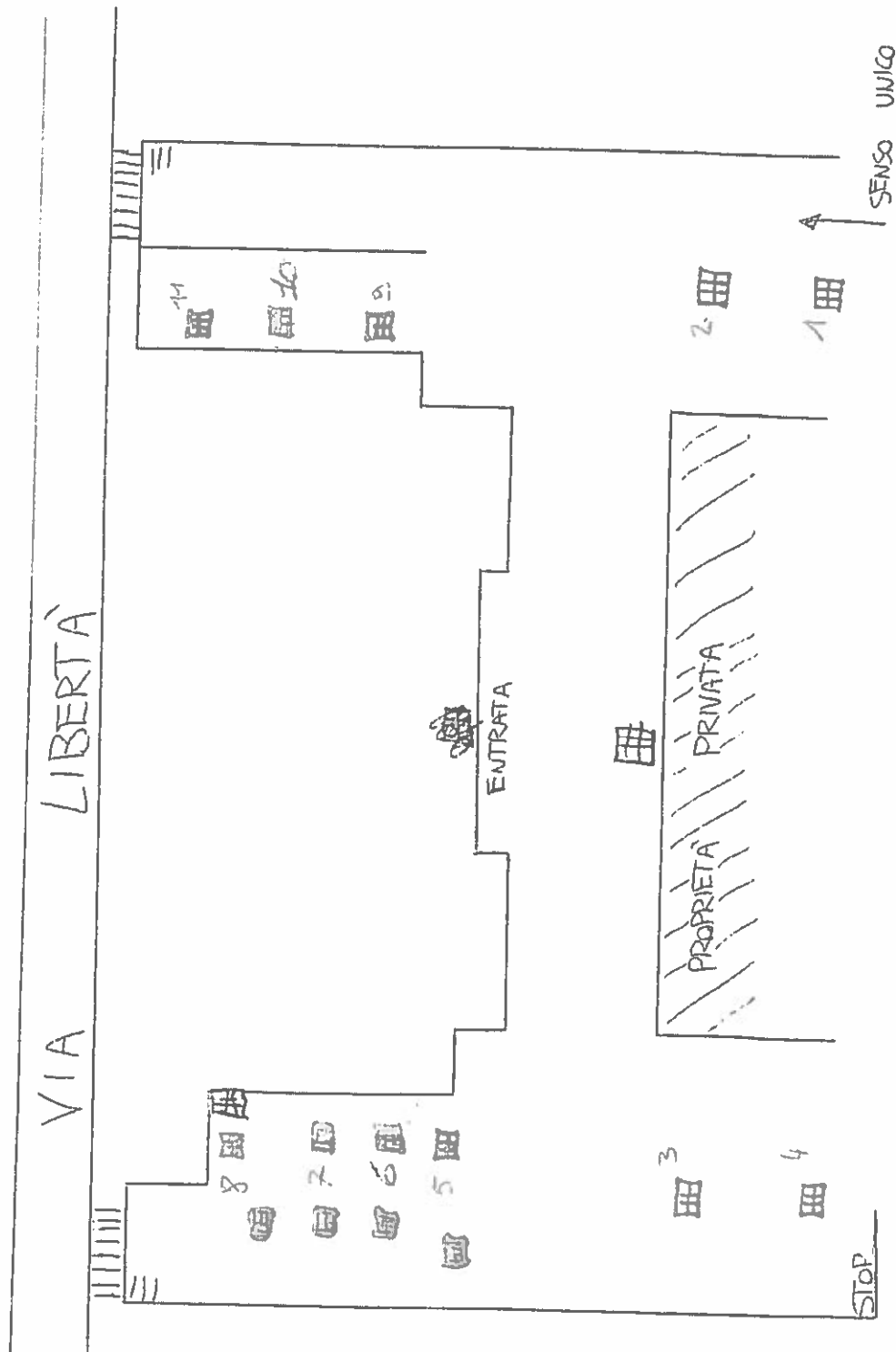
▤ GRIGLIA

~~Distretto~~ Plovene
Sede Distrettuale

all. 9

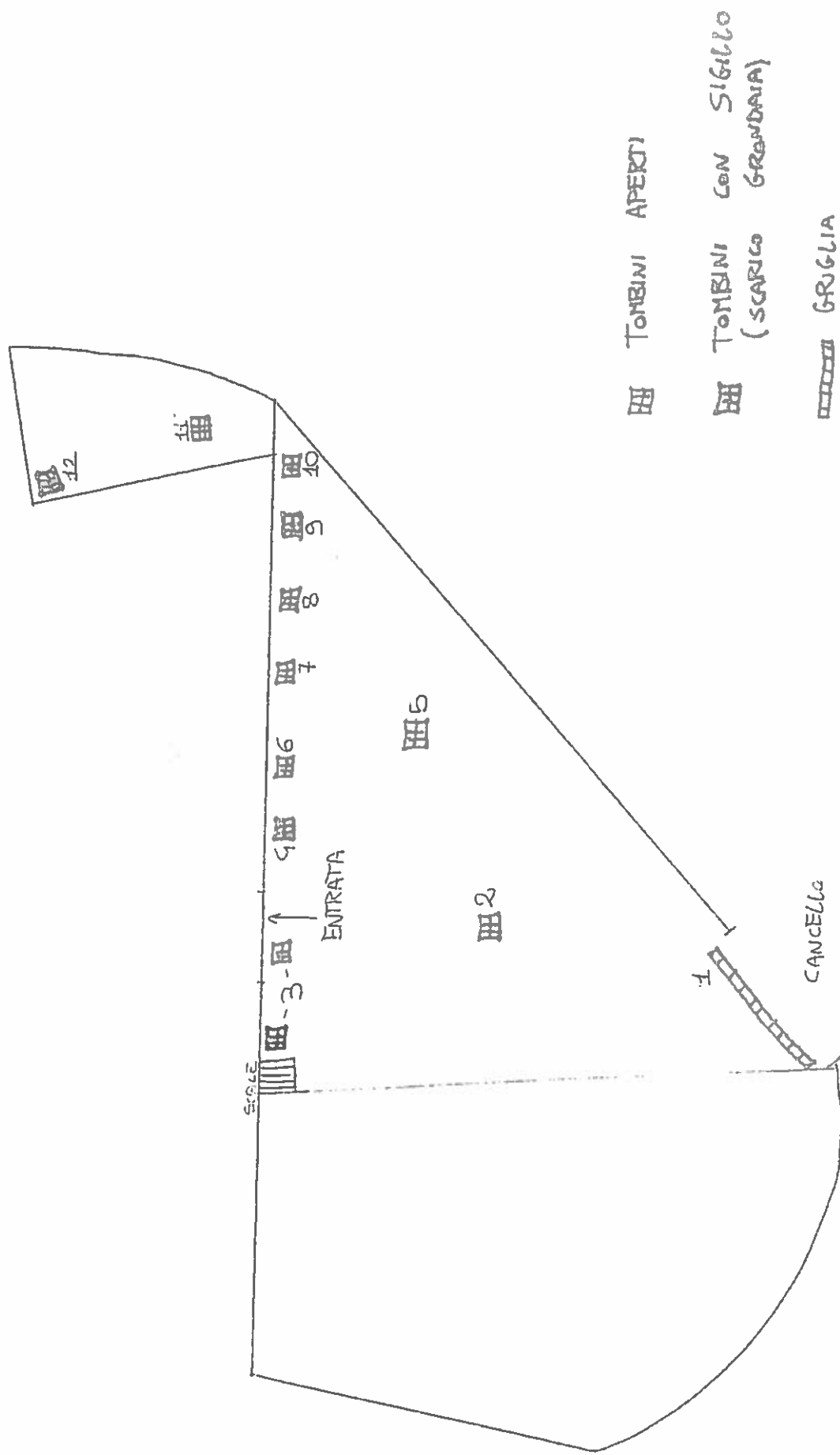
▣ Tombini Aperti

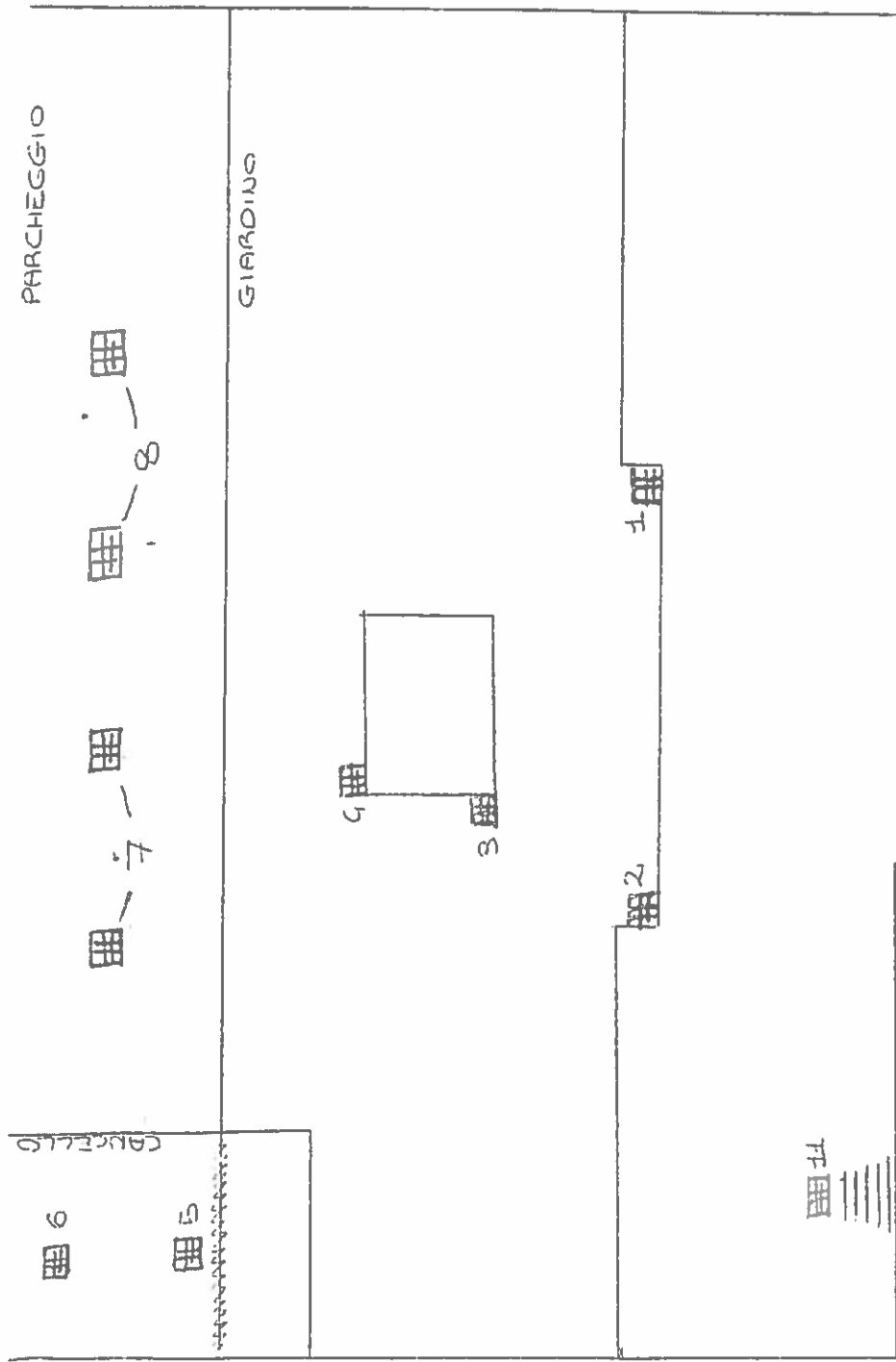
▣ Tombini con Sigillo
(scarico GRONDAIA)



~~DISTRETTO~~ BREGANZE
Sede Distrettuale

7/11/10





All. 11

Sede Distrettuale
Zugliano

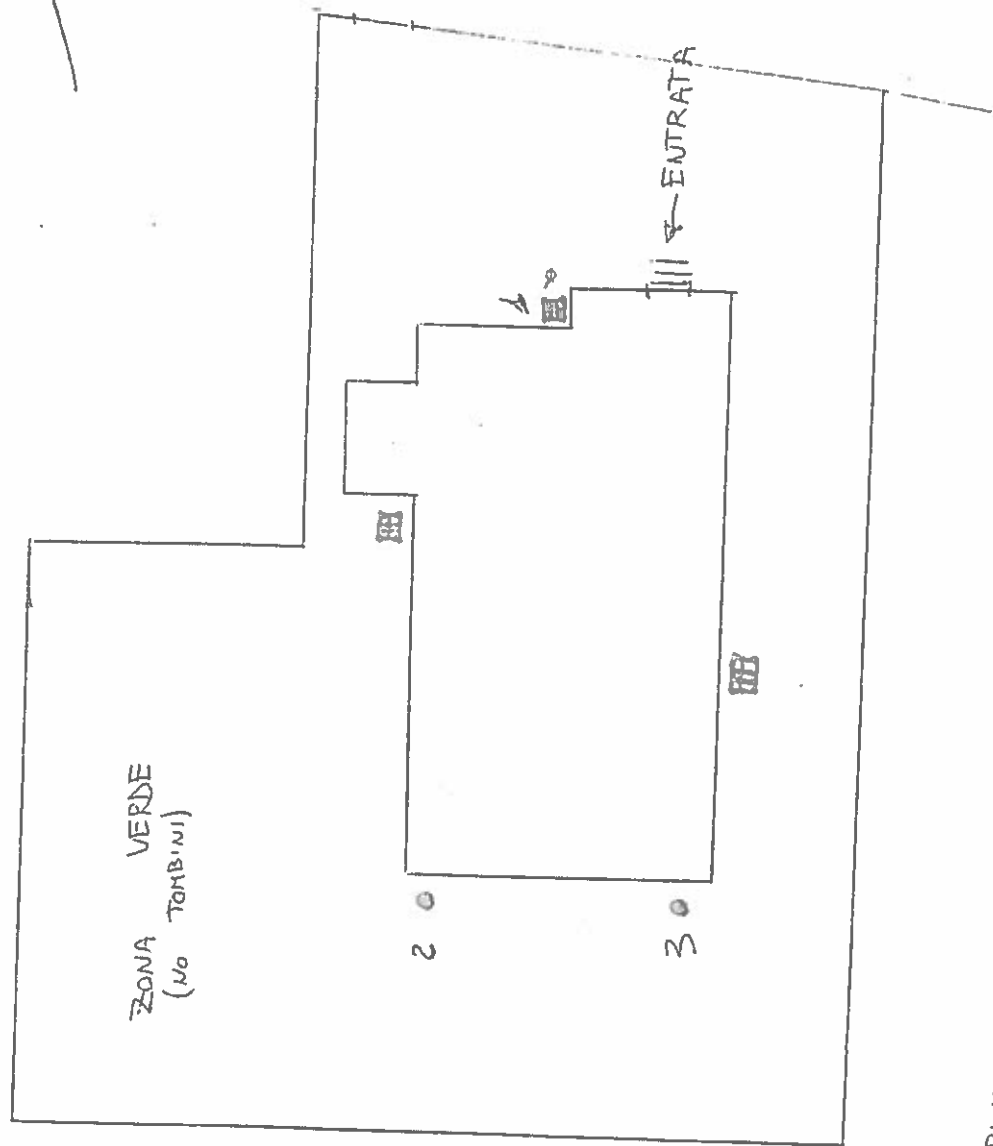
- ▣ Tombini aperti
- ▣ Grandaiia chiusa
- ▣ Grandaiia aperta con
sasse,

VIA ENRICO FERMI

~~DISTRETTO SOCIO SANITARIO I DI ZUGLIANO~~
~~UTAP ZUGLIANO~~

SERB THIENE

11.12



GRONDAIA SENZA TOMBINI

TOMBINO CHIUSO